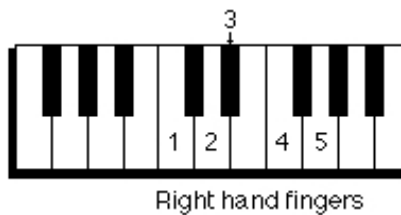


Shabbat Shalom

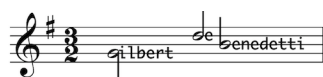


Traditional Jewish
Arr: Gilbert DeBenedetti

Shab-bat sha - lom, Shab-bat sha - lom,

The first line of musical notation is in 4/4 time. It consists of two measures. The first measure contains four notes: G4 (quarter), A4 (quarter), B4 (quarter), and C5 (quarter). The second measure contains four notes: D5 (quarter), C5 (quarter), B4 (quarter), and A4 (quarter). There are fermatas over the final notes of both measures. Fingerings 1, 5, and 4 are indicated above the first three notes of the first measure.

Shab - bat shab - bat shab - bat shab - bat sha - lom.

The second line of musical notation is in 4/4 time and consists of a single long measure. It contains a sequence of notes: G4 (quarter), A4 (quarter), B4 (quarter), C5 (quarter), D5 (quarter), C5 (quarter), B4 (quarter), A4 (quarter), G4 (quarter), and a final G4 (quarter) with a fermata. The lyrics "Shab - bat shab - bat shab - bat shab - bat sha - lom." are written below the notes.

More sheet music at:
www.gmajormusictheory.org