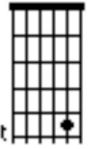




# I Have a Little Dreidle

## Guitar Level Two

E on B string



5th fret

arr: Gilbert DeBenedetti

Musical notation for the first system, including a treble clef, a common time signature, and a key signature of one sharp (F#). The melody is written on a single staff with lyrics underneath. The guitar tablature is shown below the staff.

I have a lit - tle drei - dle, I made it out of clay, And

TAB: 3 1 1 3 3 0 1 0 3 3 1 0 3 0 3

Musical notation for the second system, including a treble clef, a common time signature, and a key signature of one sharp (F#). The melody is written on a single staff with lyrics underneath. The guitar tablature is shown below the staff. An annotation 'on B string' points to a note on the B string.

when it's dry and rea - dy, Oh drei - dle I shall play. Oh

TAB: 3 3 0 0 1 3 3 3 1 0 3 1 5 0 2

Musical notation for the third system, including a treble clef, a common time signature, and a key signature of one sharp (F#). The melody is written on a single staff with lyrics underneath. The guitar tablature is shown below the staff.

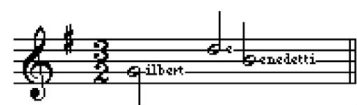
drei - dle, drei - dle, drei - dle, I made it out of clay, And

TAB: 3 5 5 5 3 5 5 3 3 1 0 3 3

Musical notation for the fourth system, including a treble clef, a common time signature, and a key signature of one sharp (F#). The melody is written on a single staff with lyrics underneath. The guitar tablature is shown below the staff.

when it's dry and rea - dy, Oh drei - dle I shall play.

TAB: 1 3 1 3 1 3 3 3 1 0 3 1 2



More *FREE* music at:  
[www.gmajormusictheory.org](http://www.gmajormusictheory.org)