

# Little Sir Echo

## In C

L.H. I, IV and V7, R.H. a sixth below "do"



Words: Laura R. Smith

J. S. Fearis  
Arr: Gilbert DeBenedetti

Musical score for "Little Sir Echo" in C major, 6/8 time. The score is divided into three systems, each with a vocal line and a piano accompaniment line. Chord symbols (I, IV, V7, C, F, G7) are placed above the piano line, and fingering numbers (1, 2, 3, 5) are placed below the piano line. Dynamics include *mf*, *f*, and *p*.

**System 1:** Treble clef, 6/8 time. Chords: C (5), F, C. Lyrics: "Lit - tle Sir Ech - o, how do you do? Hel -". Dynamics: *mf*, *f*. Fingering: 1, 2, 5, 1, 2, 5, 1, 3.

**System 2:** Treble clef, 6/8 time. Chords: C, F. Lyrics: "lo (Hel - lo!) Hel - lo! (Hel - lo!) Lit - tle Sir Ech - o, how". Dynamics: *f*, *p*, *mf*. Fingering: 1, 1, 2, 5.

**System 3:** Treble clef, 6/8 time. Chords: C, G7, C. Lyrics: "do you do? Hel - lo (Hel - lo!) Hel - lo!". Dynamics: *f*, *p*, *f*. Fingering: 1, 2, 1, 5, 1, 1.

# Little Sir Echo

## In G

L.H. I, IV and V7, R.H. a sixth below "do"



Words: Laura R. Smith

J. S. Fearis  
Arr: Gilbert DeBenedetti

Chords: G, C, G

1 3 1 3

*mf* Lit - tle Sir Ech - o, how do you do? *f* Hel -

1 2 3 5 I 1 2 3 5 IV I

Chords: G, C

2

lo (Hel - lo!) *f* Hel - lo! (Hel - lo!) *p* *mf* Lit - tle Sir Ech - o, how

1 I IV

Chords: G, D7, G

2

do you do? *f* Hel - lo (Hel - lo!) *f* Hel - lo! *p*

1 2 3 5 1 2 3 5 1 2 3 5 V7 I

# Little Sir Echo

## In F

L.H. I, IV and V7, R.H. a sixth below "do"



Words: Laura R. Smith

J. S. Fearis  
Arr: Gilbert DeBenedetti

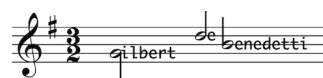
Musical score for "Little Sir Echo" in F major, 3/4 time. The score is divided into three systems, each with a vocal line and a piano accompaniment line. Chord symbols are provided above the vocal line, and fingering numbers are provided below the piano line.

**System 1:** Chords: F, Bb, F. Lyrics: "Lit - tle Sir Ech - o, how do you do? Hel -".

**System 2:** Chords: F, Bb. Lyrics: "lo (Hel - lo!) Hel - lo! (Hel - lo!) Lit - tle Sir Ech - o, how".

**System 3:** Chords: F, C7, F. Lyrics: "do you do? Hel - lo (Hel - lo!) Hel - lo!".

More sheet music at:  
[www.gmajormusictheory.org](http://www.gmajormusictheory.org)



# Little Sir Echo

## In D

L.H. I, IV and V7, R.H. a sixth below "do"



Words: Laura R. Smith

J. S. Fearis  
Arr: Gilbert DeBenedetti

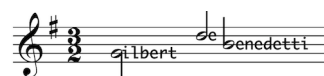
Musical score for "Little Sir Echo" in D major, 3/4 time. The score is divided into three systems, each with a vocal line and a piano accompaniment line. Chord symbols are provided above the vocal line, and fingering numbers are provided below the piano line.

**System 1:** The vocal line begins with a *mf* dynamic. The piano accompaniment starts with a *mf* dynamic. Chords are D (5) and G. The lyrics are "Lit - tle Sir Ech - o, how do you do? Hel -".

**System 2:** The vocal line continues with a *f* dynamic. The piano accompaniment starts with a *p* dynamic. Chords are D and G. The lyrics are "lo (Hel-lo!) Hel - lo! (Hel-lo!) Lit - tle Sir Ech - o, how".

**System 3:** The vocal line continues with a *f* dynamic. The piano accompaniment starts with a *p* dynamic. Chords are D, A7, and D. The lyrics are "do you do? Hel - lo (Hel - lo!) Hel - lo!".

More sheet music at:  
[www.gmajormusictheory.org](http://www.gmajormusictheory.org)



# Little Sir Echo

## In A

L.H. I, IV and V7, R.H. a sixth below "do"



Words: Laura R. Smith

J. S. Fearis  
Arr: Gilbert DeBenedetti

Musical score for piano and voice in the key of A major (one sharp). The score is divided into three systems, each with a vocal line and a piano accompaniment line. Chord symbols are provided for the piano accompaniment.

**System 1:**  
 Treble clef: A5, D, A, 1, 3  
 Bass clef: mf, I, IV, I  
 Lyrics: Lit - tle Sir Ech - o, how do you do? f Hel -

**System 2:**  
 Treble clef: 2, f, p, mf, D  
 Bass clef: 1, I, IV  
 Lyrics: lo (Hel - lo!) f Hel - lo! (Hel - lo!) mf Lit - tle Sir Ech - o, how

**System 3:**  
 Treble clef: 2, E7, A, 2 1, 5 1.  
 Bass clef: I, V7, I  
 Lyrics: do you do? f Hel - lo (Hel - lo!) f Hel - lo!

# Little Sir Echo

## In E

L.H. I, IV and V7, R.H. a sixth below "do"



Words: Laura R. Smith

J. S. Fearis  
Arr: Gilbert DeBenedetti

Musical score for "Little Sir Echo" in E major, 3/4 time. The score is divided into three systems, each with a vocal line and a piano accompaniment line. Chords are indicated by letters (E, A, B7, V7, I, IV) above or below the notes. Fingerings are indicated by numbers 1-5. Dynamics include *mf* (mezzo-forte) and *p* (piano).

**System 1:** Chords: E (5), A, E. Lyrics: "Lit - tle Sir Ech - o, how do you do? Hel -".

**System 2:** Chords: E, A. Lyrics: "lo (Hel-lo!) Hel - lo! (Hel-lo!) Lit - tle Sir Ech - o, how".

**System 3:** Chords: B7, E. Lyrics: "do you do? Hel - lo (Hel - lo!) Hel - lo!".

More sheet music at:  
[www.gmajormusictheory.org](http://www.gmajormusictheory.org)

