



Israeli Dance

זמר עתיק

Zemer Atik / Ancient song

Composed: Amitai Ne'eman

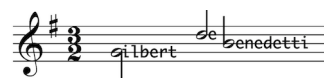
Arr: Gilbert DeBenedetti

Musical notation for the first system (measures 1-3). The piece is in 4/4 time. Measure 1 starts with a piano (*p*) dynamic. Fingerings are indicated: 1 for the first note, 4 for the fourth, and 3 for the fifth. Measure 2 contains a whole rest in the treble clef and a half note in the bass clef. Measure 3 features a triplet of eighth notes in the treble clef and a half note in the bass clef.

Musical notation for the second system (measures 4-6). Measure 4 begins with a whole rest in the treble clef and a half note in the bass clef. Measure 5 contains a half note in the treble clef and a half note in the bass clef. Measure 6 features a whole rest in the treble clef and a half note in the bass clef.

Musical notation for the third system (measures 7-9). Measure 7 contains a half note in the treble clef and a half note in the bass clef. Measure 8 features a half note in the treble clef and a half note in the bass clef. Measure 9 contains a half note in the treble clef and a half note in the bass clef. The system concludes with a 2/4 time signature change and a 1/4 time signature change.

More sheet music at:
www.gmajormusictheory.org



Musical notation system 1 (measures 10-12). Treble clef, bass clef. Measure 10 starts with a treble clef note. Measure 11 features a *mf* dynamic marking and a slur over a sequence of notes in the bass clef with fingerings 4, 5, 3, 3. Measure 12 continues the bass clef line with a sharp sign.

Musical notation system 2 (measures 13-15). Treble clef, bass clef. Measure 13 has fingerings 1, 2 in the bass clef. Measure 14 has a slur and a sharp sign in the bass clef. Measure 15 has a *p* dynamic marking and a slur over notes in the bass clef with a fingering of 3.

Musical notation system 3 (measures 16-18). Treble clef, bass clef. Measure 16 has a slur over notes in the treble clef. Measure 17 has a slur over notes in the treble clef with fingerings 3, 2. Measure 18 has a slur over notes in the treble clef with a fingering of 1. The bass clef has a sharp sign and a slur over notes in measure 18 with a fingering of 1.

Musical notation system 4 (measures 19-20). Treble clef, bass clef. Measure 19 is marked *rit.* and has a slur over notes in the treble clef with fingerings 1, 5. Measure 20 has a slur over notes in the treble clef.



More sheet music at:
www.gmajormusictheory.org

Musical notation system 5: A short musical phrase in treble clef, 3/4 time, with a key signature of one sharp (F#). The notes are G4, A4, B4, and C5. The name "Gilbert Benedetti" is written below the staff.