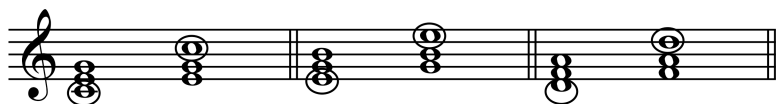


ANSWERS TO CHAPTER TWELVE PATHWAYS TO HARMONY

by Gilbert DeBenedetti

www.gmajormusictheory.org Click: "Fundamentals"

12.1



12.2

1.

root position	1st inversion	2nd inversion	1 st inversion
$\frac{5}{3}$	$\frac{6}{3}$	$\frac{6}{4}$	$\frac{6}{3}$

2.

Root position	1 st inversion	root position	2 nd inversion
root	third	root	fifth

3.

$\frac{5}{3} \frac{5}{3} | \frac{6}{3} \frac{5}{3} \frac{6}{3} | \frac{6}{4} \frac{5}{3} \frac{6}{3} | \frac{6}{3} \frac{5}{3} \frac{6}{3} \frac{6}{3} \frac{5}{3} \frac{6}{3} | \frac{6}{4} ||$

12.3

E, B, A, G, C
F, C, E, G, D

12.4

See Reference Sheet after 12.2 in Workbook

12.5

1.

1 st Inv	6	1 st Inv	6	2 nd Inv	$\frac{6}{4}$	Root Pos	
F	3rd	A	3rd	B	5th	A	Root

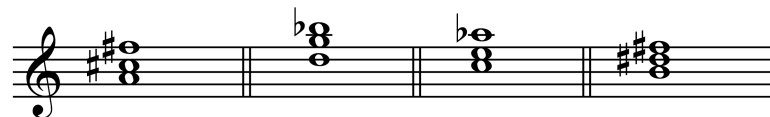
Root Pos		1 st Inv	6	2 nd Inv	$\frac{6}{4}$	1 st Inv	6
E	Root	B	3rd	D	5th	A	3rd

2.

$\frac{6}{4} \frac{6}{4} \frac{6}{4} \frac{6}{4} \frac{6}{4}$ [blank] [not a triad] $\frac{6}{4}$

- | | |
|-----------------|----------------|
| 1. mediant | 4. tonic |
| 2. leading tone | 5. mediant |
| 3. tonic | 6. subdominant |

12.6



12.7

1.

2nd inv 5th $\frac{6}{4}$, 1st inv 3rd 6, 2nd inv 5th $\frac{6}{4}$, root root [blank], 1st inv 3rd 6

2.

G: ii, Eb: IV, D: V, F: IV, E: vii^o

gm: vii^o, fm: iv, f#m: i, em: vii^o, dm: III+^{5#}