

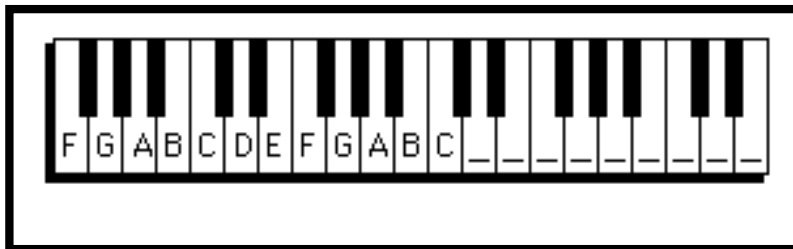
## Chapter 1. The Keyboard and Treble Clef

In this chapter you will:

1. Play a tune on the keyboard
2. Identify notes on the keyboard
3. Write treble clefs on a staff
4. Review the material to here
5. Identify notes on the treble staff
6. Write notes on the treble staff
7. Identify whole, half and quarter notes, and draw stems on note-heads
8. Match notes on the keyboard with notes on the staff
9. Write a familiar song

Date:

### 1.1 Play a tune on the keyboard



- Harmony is the study of how pitches, or notes, are arranged to make music. In order to explain these arrangements it is convenient to show the keys on a piano keyboard. On the keyboard each key plays a certain pitch.
- Each white key corresponds to a letter A, B, C, D, E, F or G. The letters proceed alphabetically from A to G and then they go back to A.
- Black keys are arranged in alternating groups of twos and threes. All A's look alike in this pattern, all B's look alike and so on.

1. *LABEL* the remaining keys on the keyboard above.

2. *PLAY* "Mary Had a Little Lamb" as shown below. The note letters are above the words. You can begin on any E on the keyboard.

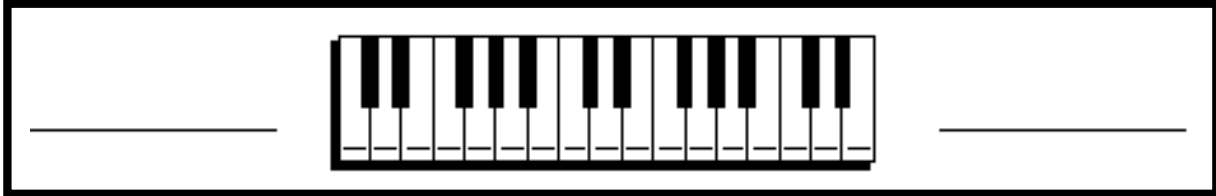
E D C D E E E D D D E G G  
Mary had a little lamb, little lamb, little lamb,

E D C D E E E E D D E D C  
Mary had a little lamb, its fleece was white as snow.

## Pathways to Harmony, Chapter 1. The Keyboard and Treble Clef

Date:

### 1.2 Identify notes on the keyboard



- On the keyboard keys to the left sound low and keys to the right sound high.
- “Middle C” is often used as a reference note.
- The first G above middle C (to the right of middle C), and the first F below middle C (to the left of middle C) are also used as reference notes.


- 
1. *WRITE* the letter name for each white key on the keyboard above.  
This keyboard does not start in the same place as the keyboard on the previous page.
  2. *WRITE* “high” and “low” in the correct spaces on either side of the keyboard.
  3. *CIRCLE* the C which is closest to the middle of the keyboard.
  4. *CIRCLE* the first G above middle C, and the first F below middle C.
  5. *GO ONLINE* to [www.gmajormusictheory.org](http://www.gmajormusictheory.org)
    - a. *CLICK* "Music Fundamentals"
    - b. *CLICK* in the "Virtual Flash Cards" column:
      - 1.1 White keys on the keyboard
    - c. *PRACTICE* the letter names you have learned on the keyboard.

Date:

### 1.3 Write treble clefs on a staff

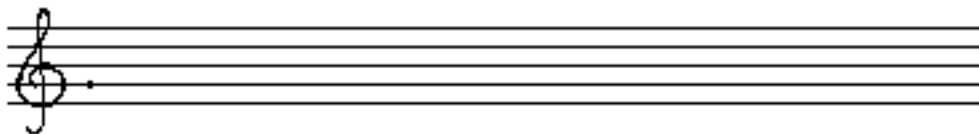
- Music is written on staves. A staff is a set of five lines and four spaces.
- Lines and spaces on the staff are numbered from the bottom.
- Each line and space stands for a certain pitch or note, and is given a letter A through G. These letters refer to the letters for the keys on the keyboard.
- Each staff of music begins with a clef. A clef is a symbol which identifies a line and space with a letter.



- This symbol, , is a G or treble clef. The G or treble clef identifies the second line as the note G above the piano's middle C.

1. *NUMBER* the lines and spaces in the squares beside the staves at the top of the page.

2. *WRITE* five treble clefs on the staff below. After each clef put a dot on the G line.



## Pathways to Harmony, Chapter 1. The Keyboard and Treble Clef

Date:

### 1.4 Review the material to here

*COMPLETE* the following sentences:

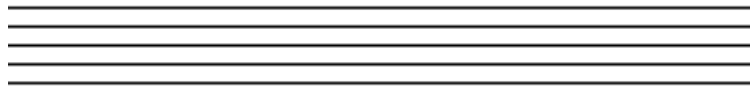
1. A staff is \_\_\_\_\_

2. The note letters are \_\_\_\_\_

3. A clef is \_\_\_\_\_

4. The G or treble clef identifies  
\_\_\_\_\_

5. Write two treble or G clefs. Put a dot on the second line.

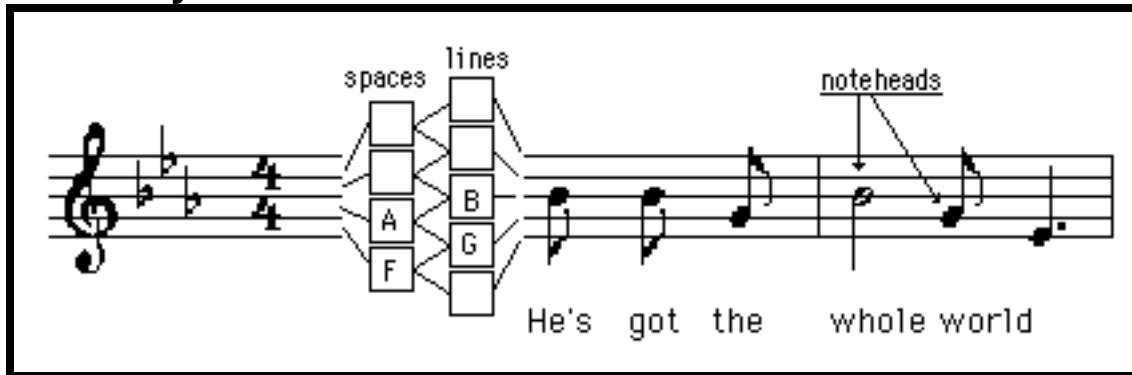


6. Notes to the right on the keyboard sound (higher/lower) \_\_\_\_\_.

7. Notes to the left on the keyboard sound (higher/lower) \_\_\_\_\_.

Date:

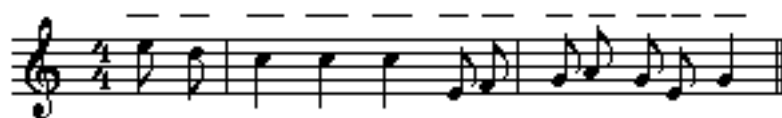
### 1.5 Identify notes on the treble staff



- Letter names proceed alphabetically on the staff from low to high alternating lines and spaces. When G is reached, the letters go back to A and then repeat.
- Note-heads are almost-circular ovals which indicate which pitch is to be played or sung. Note-heads may be filled in or open.
- A note-head is on a line if a line goes through it. It is in a space if a line does not go through it.

1. *WRITE* the letter name for each line and space in the boxes at the top of the page.

2. *WRITE* the letter name for each note-head in the music below.



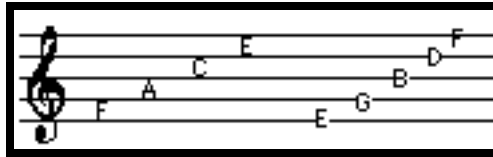
Do your ears hang low, do they wobble to and fro?

3. *PLAY* this phrase.

# Pathways to Harmony, Chapter 1. The Keyboard and Treble Clef

Date:

## 1.6 Write notes on the treble staff



There is a faster way to identify the letters on a staff with treble clef:

- Notes in the spaces, starting from the bottom, spell the word FACE.
- Notes on the lines, starting from the bottom, are E G B D and F, as in Every Good Boy Does Fine.

1. *IDENTIFY* the following notes, and learn to *PLAY* one of these phrases:



The Arkansas Traveler -- Traditional fiddle tune



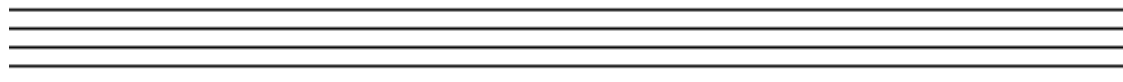
2. *DRAW* a treble clef at the beginning of the staff below.

3. *DRAW* open note-heads (without stems) for the letters above the staff.

Draw a  
treble  
clef

Welsh Lullaby

C B A C D C B G A B B C



Sleep my child and peace at - tend thee, All Through the Night

4. *GO ONLINE* to [www.gmajormusictheory.org](http://www.gmajormusictheory.org)

a. *CLICK* "Music Fundamentals"

b. *CLICK* in the "Virtual Flash Cards" column:

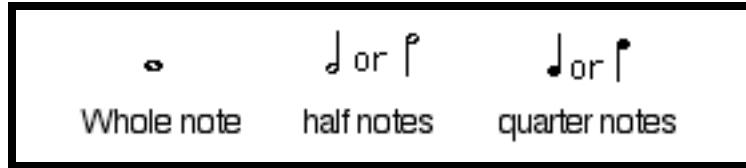
1.2 Treble Clef


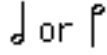
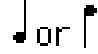
c. *PRACTICE* the letter names you have learned on the staff.

# Pathways to Harmony, Chapter 1. The Keyboard and Treble Clef

Date:

## 1.7 Identify whole, half and quarter notes, and draw stems on note-heads



- A beat is a steady pulse which underlies the music. When you tap your foot to the music, you usually tap the beat.
- Stems are vertical lines which are frequently attached to the note-heads.
- Open note-heads without stems, , are usually four beats long. They are called whole notes.
- Open note-heads with stems, , are usually two beats long. They are half as long as whole notes, so they are called half notes.
- Filled in note-heads with stems, , are usually one beat long. They are one quarter as long as whole notes, and so they are called quarter notes.

*IDENTIFY* the numbered notes as whole, half or quarter notes:



1. \_\_\_\_\_ 3. \_\_\_\_\_  
2. \_\_\_\_\_ 4. \_\_\_\_\_

- If a note-head is on the middle line or higher, the stem is on the left of the note-head. This stem goes down.
- If a note-head is on the second space or lower, the stem is on the right of the note-head. This stem goes up. See the above staff.

*DRAW* stems for these quarter notes and half notes.



# Pathways to Harmony, Chapter 1. The Keyboard and Treble Clef

Date:

## 1.8 Match notes on the keyboard and the treble staff



1. *WRITE* letter names on each white key on the keyboard above.

2. *WRITE* quarter notes under each number according to where the number appears on the keyboard.

1 2 3 4 5 6 7 8

Praise God from Whom all bless-ings flow

5 4 3 2 1 6 7 8

3. *WRITE* on the keyboard the number for each note on the staff.

1 2 3 4 5 6 7

The first No - el

1



# Pathways to Harmony, Chapter 1. The Keyboard and Treble Clef

Date:

## 1.9 Write a Familiar Song

1. *WRITE* the treble clefs and the notes to “Jingle Bells.”

For the notes, refer to the note letters and the durations above the staves.

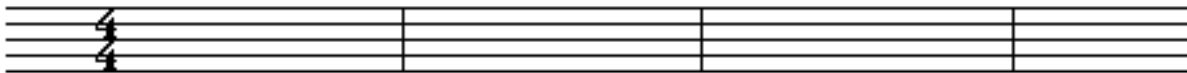
Durations are on top. Use this code to write them correctly:

Q= quarter note, H=half note and W= whole note.

2. *PLAY* “Jingle Bells!”

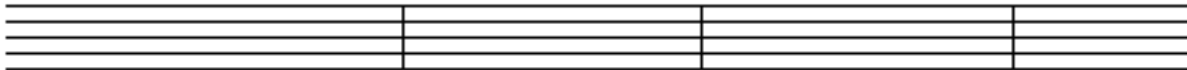


Q	Q	H	Q	Q	H	Q	Q	Q	Q	W
B	B	B	B	B	B	B	D	G	A	B



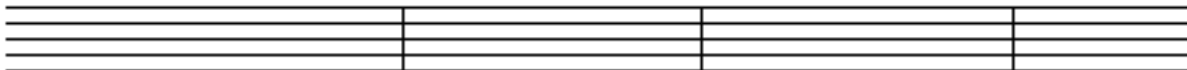
Jin-gle bells,    Jing-le bells,    Jin-gle all the    way,

Q	Q	Q	Q	Q	Q	Q	Q	Q	Q	Q	Q	H	H
C	C	C	C	C	B	B	B	B	A	A	B	A	D



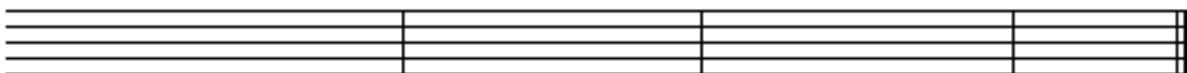
Oh, what fun it    is to ride a    one horse o-pen    sleigh—,

Q	Q	H	Q	Q	H	Q	Q	Q	Q	W
B	B	B	B	B	B	B	D	G	A	B



Jin-gle bells,    Jing-le bells,    Jin-gle all the    way,

Q	Q	Q	Q	Q	Q	Q	Q	Q	Q	Q	Q	W
C	C	C	C	C	B	B	B	D	D	C	A	G



Oh, what fun it    is to ride a    one horse o-pen    sleigh.