

Name _____
Date _____

Test on Chapters 11 and 12

(Instructor writes information in parentheses and underlined in red.)

1. Write the key signature and the note. (Instructor writes key and scale degree.)

A musical staff consisting of five lines. It begins with a treble clef on the left. The staff is divided into four measures by vertical bar lines. The first measure contains a treble clef, and the last measure contains a bass clef. The remaining two measures are empty.

_____ 10 pts

2. Write the key and the scale degree of the note. (Instructor writes key sig. and note.)

A musical staff consisting of five lines. It begins with a treble clef on the left. The staff is divided into four measures by vertical bar lines. The first measure contains a treble clef, and the last measure contains a bass clef. The remaining two measures are empty.

_____ 10 pts

3. Write the *major* keys and Roman numerals. Roman numerals should reflect the type of triad. (Instructor writes key sig. and triad.)

A musical staff consisting of five lines. It begins with a treble clef on the left. The staff is divided into four measures by vertical bar lines. The first measure contains a treble clef, and the last measure contains a bass clef. The remaining two measures are empty.

_____ 10 pts

4. Write the *minor* keys and Roman numeral. Roman numerals should reflect the type of triad. (Instructor writes key sig. and triad.)

A musical staff consisting of five lines. It begins with a treble clef on the left. The staff is divided into four measures by vertical bar lines. The first measure contains a treble clef, and the last measure contains a bass clef. The remaining two measures are empty.

minor _____ minor _____ minor _____ minor _____ minor _____ 10 pts

next page

5. For each triad:

- a) Identify the triad as root position (R), first inversion (1st), or second inversion (2nd)
- b) Give appropriate figures ($\frac{5}{3}$, $\frac{6}{3}$ or $\frac{6}{4}$)
- c) Identify the letter of the root
- d) Identify the bottom note as the root (R), third (3rd) or fifth (5th)

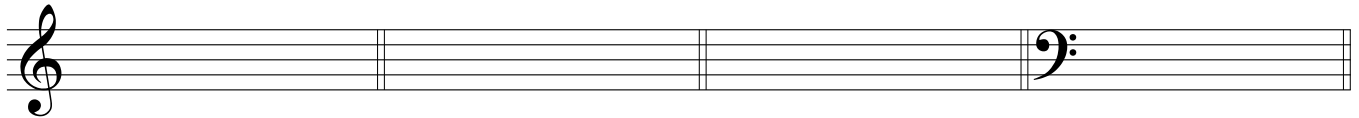
(Instructor writes triads in root pos. or inverted.)



- a) _____ b) _____ a) _____ b) _____ a) _____ b) _____
 c) _____ d) _____ c) _____ d) _____ c) _____ d) _____

16 pts

6. Write these triads. (Instructor writes triads' letter names, qualities and inversion figures.)



12 pts

test = 68 pts